

## The ORTEC® Times

Customer Newsletter



### In This Issue

Thank You for Your Feedback

NEW! Detective-Remote V3

NEW! Mobile MCB Server

NEW! Detective-Pro

NEW! Programmer's Toolkit

NEW! M-1-T-2 Tripod

NEW! ICS

NEW! Renaissance V7

Technical Tip - Noise

Latest Advances in HPGe Detectors  
and Coolers

Training Courses

[Join Our Mailing List!](#)

### NEW! Detective-Remote V3

#### Nuclear Threat Detection Software for Mobile and Transportable Search



### To Our Valued Customer

This global customer newsletter provides information on new product developments, technical tips, and ORTEC product training. We welcome your feedback on how to make it more useful. If you have a case study you would like to share, please e-mail it to [susie.brockman@ametek.com](mailto:susie.brockman@ametek.com).

#### Thank You For Your Feedback

Thank you for your feedback regarding the ORTEC website. As we redesign for 2016 we will try to incorporate as many suggested changes as possible into the new site. Your input is valuable to us as we move forward into our redesign.

If you didn't have a chance to submit your survey responses you can still participate at the following link.

[Web Survey](#)

Detective-Remote is an advanced generation, real-time wireless or wired nuclear detection solution for customers looking to build or expand into detection and identification systems to support mobile search systems, maritime monitoring systems, chokepoint monitors, environmental and radiation emergency response applications.

Detective-Remote acquires real-time data and instantly displays device status, alarms, and ID results into a single easy-to-view display. The system continuously monitors all instrument

hardware and applies advanced algorithms to provide an instant response to radiological or nuclear threats.

Look for Version 4 with improved algorithms to be released shortly.

[Download Detective-Remote Datasheet](#)

### **NEW! Mobile MCB Server Wireless Control for Detective and trans-SPEC Products**



The Mobile MCB Server application offers wireless communication for all Detective and trans-SPEC instruments.

The MCB Server enables the instrument to communicate with other ORTEC software applications such as MAESTRO, GammaVision, and Detective-Remote.

The Mobile MCB Server acts like a wireless version of the USB connection, allowing users to control and monitor any portable spectrometer through a wireless network.

Users can develop their own applications through the use of the optional A11 Programmer's toolkit.

### **NEW! Detective-Pro Micro-Detective-HX PDA Software**



Detective-Pro software is designed as a replacement to the existing PDA software that is currently installed on Micro-Detective-HX hand-held instruments and will now be included on Micro-Detective-HX systems as the standard software.

The new software package has the same user interface as the previous Micro-Detective-HX software, but it has significant improvements in identification such as:

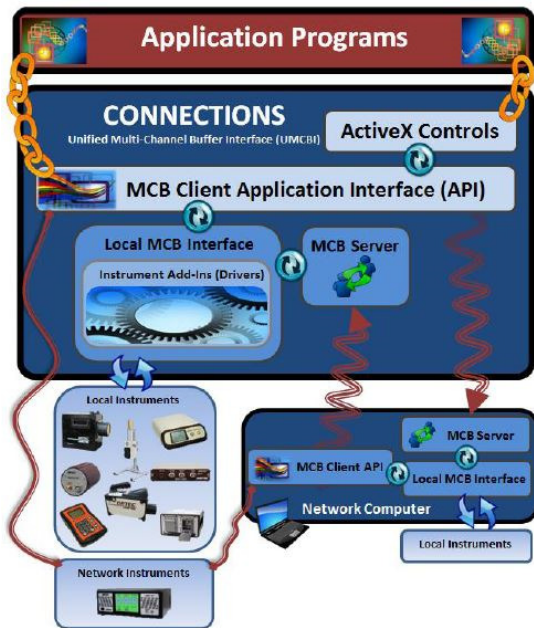
- Improved identification of SNM
- Better and more sensitive algorithm for certain nuclides such as Co-57
- Reduced False Alarms
- Increased Library

### **NEW! CONNECTIONS Programmer's Toolkit V8**

Version 8 of the CONNECTIONS Programmer's Toolkit is now available! This release includes the current version of CONNECTIONS, modern programming examples, and extensive updates to the programmer's manual.

The Programmer's Toolkit is an interface to our CONNECTIONS instrumentation communication platform that allows end users to write their own applications for the Windows environment.

[Download CONNECTIONS Programmer's Toolkit Datasheet](#)



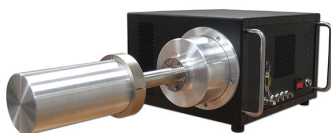
## NEW! M-1-T-2 Tripod



The M-1-T-2 tripod supports ORTEC Detective and trans-SPEC family products for use with in-situ measurements. Available in two models, one for the Micro-Detective/Micro-trans-SPEC and one for the Detective/trans-SPEC and Detective/trans-SPEC-100 instruments.

[Download M-1-T-2 Datasheet](#)

## NEW! ICS Integrated Cryo-cooling System



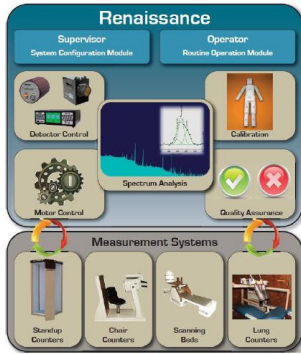
ICS is the newest integrated electromechanical cooling system for high-purity Germanium (HPGe) radiation detectors and utilizes the latest advancements in cryogenic technology to provide LN<sub>2</sub>-free operation with no loss of detector performance. ICS delivers significant benefits to users who want a state-of-the-art

electromechanical cooling solution by incorporating a unique hardened cryostat that eliminates thermal cycling and is capable of operating over an extended environmental range.

The Stirling cooler in the ICS is manufactured by SunPower and is coupled with Active Vibration Cancellation technology to mitigate micro phonic noise, thus allowing the best resolution performance for HPGe detectors using a mechanical cooler.

[Download ICS Datasheet](#)

## New! Renaissance Version 7 Whole Body Counting Software



Renaissance is a comprehensive gamma spectroscopy solution for internal contamination monitoring using High and Low Resolution detectors (HPGe and NaI) in a broad spectrum of rapid screening, detailed investigation, and fit for purpose measurement systems.

It is easily configured for single or multiple detector measurements using fixed position or automated scanning systems, such as Standup, Chair, and/or Bed counters.

This new release is compatible with Windows 7 and Windows 8.1 Pro. A number of new features were added including maximum dead time limit for use with measurements made in the Operator Program, the option for a password was added in the Operator Program, the HPGe analysis engines were updated, as well as improvements to

the calibration and analysis capabilities for 512 channel sodium iodide spectra and many more.

[Download Renaissance Version 7 Datasheet](#)

## Technical Tip - Detectors



### Is Your Detector the Cause of Noise in the System?

A sudden increase in noise in any system is often thought to be caused by the detector.

Tip: Be sure to first eliminate the low voltage power supplies as well as the high voltage supplies as a possible source. The cabling is also a source of noise as cables become worn and connections become soiled with age and can often be overlooked.

Need to ask a technical question?  
Email [ortec.tsg@ametek.com](mailto:ortec.tsg@ametek.com)

## New ORTEC HPGe Detector and Mechanical Coolers Technical Overview PPT

An overview of the latest cooling technologies available for HPGe detectors is detailed in the presentation below. Detector specifications are provided as well as benefits for specific models.

New non-LN2 cooling technologies are listed and compared. ORTEC has been integrating HPGe systems with mechanical coolers for gamma spectrometry and portable radiation identification systems for over ten years.

We invite you to review the technical presentation to better understand the latest advances in detectors and cooling technologies.

[Download Presentation](#)

**Register Now for ISOTOPIC and Gamma Spectroscopy Training Courses**



### **In-Situ Measurements Using Germanium Detectors, Program Isotopic, and the ISO-CART**

Designed for intermediate to advanced spectroscopists using Program Isotopic to perform In-Situ Measurements. This course includes setup procedures for configuration of objects as well as soil measurements. Most of the main menu items of both the Supervisor and Operator menus will be explained. Other topics include how to setup libraries, quality assurance programs, and detector calibration. Dummy objects with known activity will be measured using the configurations designed earlier in the class.

Oak Ridge, TN, USA - September 14-16, 2015\*  
Registration deadline August 17, 2015

### **Gamma Spectroscopy Using HPGe Detectors and GammaVision**

Gamma Spectroscopy analysis for intermediate gamma spectroscopists using HPGe systems and GammaVision. This course begins with basic physics for gamma spectroscopy, HPGe detectors and signal processing, followed by in-depth instruction of all aspects of GammaVision software including interface, features, comprehensive gamma spectrum analysis methods, interactive analysis, spectral correction tools, operation automation, report and interpretation.

This class will be taught in different ORTEC facilities throughout the year:

Oak Ridge, TN, USA - August 25-28, 2015  
Registration deadline July 27, 2015

\*Dates are provisional subject to minimum registrations.

For more information on training courses offered by ORTEC, please contact

[David.Pan@ametek.com](mailto:David.Pan@ametek.com)

**NEED Quick Delivery for a HPGe Detector?  
Check our [detector stock list](#).**

Visit our website at [www.ortec-online.com](http://www.ortec-online.com). Or if you prefer to contact sales directly [click here](#).