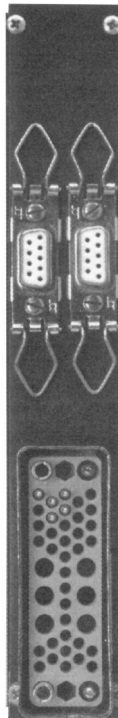
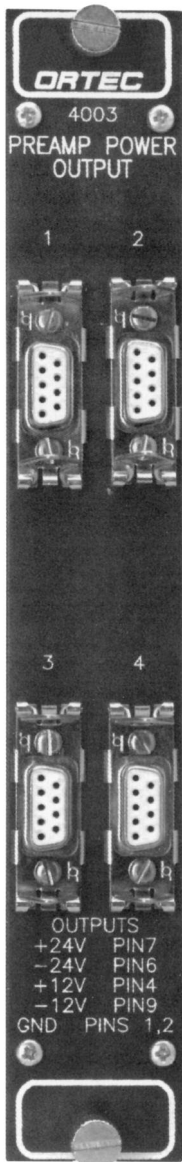


- Convenient NIM bin power outlet for 6 preamplifiers
- Individual filtered outlets ensure low noise
- Standard 9-pin D connectors deliver +12-V and +24-power



The Model 4003 Preamplifier Power Output module provides a convenient way to deliver DC power from a NIM bin to preamplifiers when appropriate connectors are not available on other modules installed in the bin. Up to 6 preamplifiers can be accommodated via the standard, 9-pin "D" connectors on this single-width NIM module.

Low-noise preamplifiers require DC power that is free of interference generated by other modules inserted in the bin. The Model 4003 protects this low-noise capability by filtering the power lines separately at each connector.

Each preamplifier power plug delivers  $\pm 12$ -V and  $\pm 24$ -V DC power on the pins designated under OUTPUTS. The Model 4003 derives its power from a NIM bin/power supply such as the Models 4001A/4002A, 4001A/4002D, 4001C/4002D, 4001C/4002E, 4001M, or 4006.

### Specifications

**Outputs** Standard ORTEC preamplifier power plugs (female, 9-pin D connectors), with four located on the front panel and two located on the rear panel. Each pin is separately filtered with the  $\pi$  network shown in Figure 1. The pins are wired to deliver the assigned voltages as shown.

Pin Number	DC Voltage
1	Ground
2	Ground
3	No connection (reserved for +6 V)
4	+12 V
5	No connection (reserved for -6 V)
6	-24 V
7	+24 V
8	No connection
9	-12 V

**POWER REQUIRED** The Model 4003 derives its power from a NIM bin power supply, such as the Models 4001A/4002A, 4001A/4002D, 4001C/4002D, 4001C/4002E, 4001M, or 4006.

#### WEIGHT

**Net** 0.74 kg (1.6 lb).

**Shipping** 2.1 kg (4.6 lb).

**DIMENSIONS** NIM-standard single-width module, 3.43 x 22.13 cm (1.35 x 8.714 in.) per DOE/ER-0457T.

### Ordering Information

To order, specify:

Model	Description
4003	Preamp Power Output

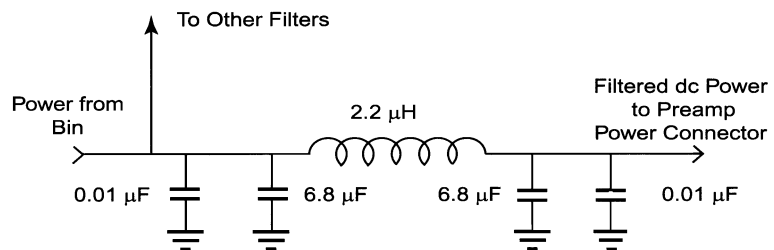


FIG. 1. A Separate  $\pi$  Filter Is Employed at Each Output.

Specifications subject to change  
032621