

The L Series meets a persistent need of high-energy physicists for up to 5-mm-thick Si detectors that can completely stop 25-MeV protons, 100-MeV alphas, or other highly penetrating particles. These devices have good radiation-damage-resistance characteristics. They are supplied in an L Mount unless otherwise specified. Warranty is one year at room temperature.

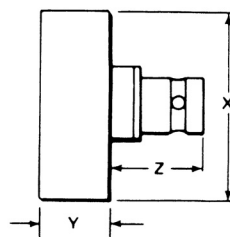
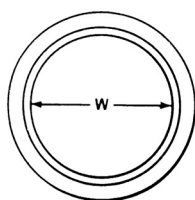
Due to the high operating bias voltage requirement of L Series detectors, typically over 700 Volts, installation inside a clean, high vacuum chamber with pressure below 2×10^{-6} Torr prior to voltage application is required. Otherwise, high voltage breakdown or corona may occur that can cause unreparable damage to the detector and is not covered by warranty.

Active Area (mm ²)	Guaranteed Maximum Resolution		Active Depth (mm)	Model No.
	α	β		
25	35	30	5	L-035-025-5
75	40	35	5	L-040-075-5
200	45	40	5	L-045-200-5

Mounting Arrangements

L BNC connector on the back of the can.
Dimensions are given in millimeters.

Model No.	Dimensions (mm)			
	W	X	Y	Z
L-035-025-5	6.0	16.7	15.2	15.9
L-040-075-5	10.0	16.7	15.2	15.9
L-045-200-5	16.0	23.5	15.2	15.9
Tol.	±0.5	±0.3	±0.3	±0.3



Specifications subject to change
051512