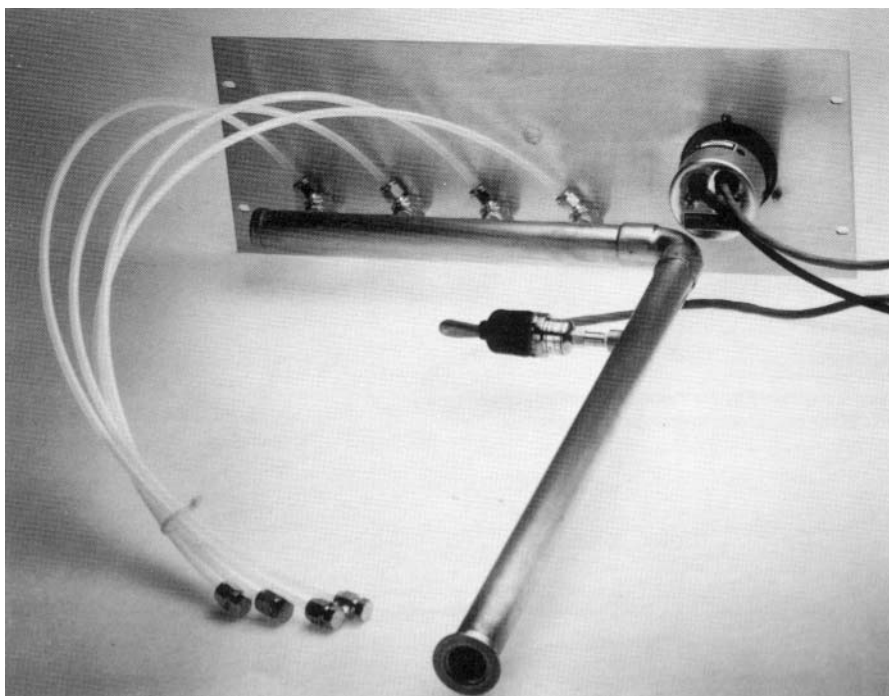


- For convenient use of up to four Model 576(A) Dual Alpha Spectrometers with a single pump
- Screw-type vacuum valves for fine adjustment of pumping speed

The ORTEC Model 576-VM Vacuum Manifold and Control has four valves and terminations for connecting up to four Model 576 or Model 576A Dual Alpha Spectrometers to a single pump, in such a way that any one unit may be vented without venting the remainder. The Model 576-VM Vacuum manifold also includes a thermocouple gauge to monitor vacuum. Designed to be installed in a 19-inch rack, it requires 115 V ac/60 Hz power or 230 V ac/50 or 60 Hz power. Specify appropriate model number.



576-VM

Vacuum Manifold and Control

Specifications

PERFORMANCE

Helium leak checked to $<3 \times 10^{-8}$ atm cm^3/s .

Operating Range: 1 to 5000 millitorr.

CONTROLS

Four screw-type vacuum valves.

INPUTS

Four flexible lines with 1/4 in. Swagelok connectors for connection directly to 576(A).

OUTPUT

1-1/8 in. copper tube with NW-25 ISOKF flange termination for connection to user-supplied vacuum pump (minimum pumping speed of 5.6 scfm). May be connected directly to Portable Pump Station. Flange may be cut off with tubing cutter if connection by vacuum rubber hose is desired.

ELECTRICAL AND MECHANICAL

Power Required: 115 v ac/60 Hz or 230 V ac/50 or 60 Hz.

Weight

Net: 3 kg (7 lb)

Shipping: 9 kg (20 lb)

Dimensions: 18 cm H x 48 cm W x 53 cm D (7 x 19 x 21 in.)

Ordering Information

To order, specify:

Model	Description
576-VM	Vacuum Manifold and Control for 115 V ac
576-VM-230	Vacuum Manifold and Control for 230 V ac



Model 576-VM Vacuum Manifold and Control used with ORTEC Alpha 8 Spectroscopy System.

Specifications subject to change
072403

ORTEC[®]

800-251-9750 • www.ortec-online.com

info@ortec-online.com • Fax (865) 483-0396
801 South Illinois Ave., Oak Ridge, TN 37831-0895 U.S.A. • (865) 482-4411
For International Office Locations, Visit Our Website

AMETEK[®]
ADVANCED
MEASUREMENT
TECHNOLOGY